

# Sandy Point Quarry: Changes and our commitment to the community



Point. An air quality assessment was undertaken by an external specialist experienced in modelling air quality from quarries and industrial facilities. It compared modelled dust concentrations from the combined existing quarry, proposed recycling activity and other background sources to NSW and Commonwealth assessment criteria designed to protect human health.

This detailed air quality modelling found that airborne dust and deposited dust levels meet EPA criteria at all receptors. While any dust generated from any quarry may contain silica dust, it will not be at levels or in a form that could lead to health impacts.

## Are hazardous or contaminated materials currently stored within the quarry site?

Prior to our management and erection of the bund wall there had been illegal dumping on the quarry site for decades (and this continues today on adjoining lands). This left us a legacy of hazardous and contaminated materials, which have been recovered by Benedict and disposed of at EPA licensed facilities.

We are not aware of any remaining on the site but assure you that should we find any more, we will continue to dispose of it properly, off-site.

No hazardous waste materials or contaminated materials are imported onto the site and the small quantities of so called "hazardous" chemicals that are needed for heavy machinery operation (like engine oil and coolant) are stored securely.

## Is any material being disposed of at the site?

No, and there will be no waste materials land-filled (or proposed to be) anywhere on the site.

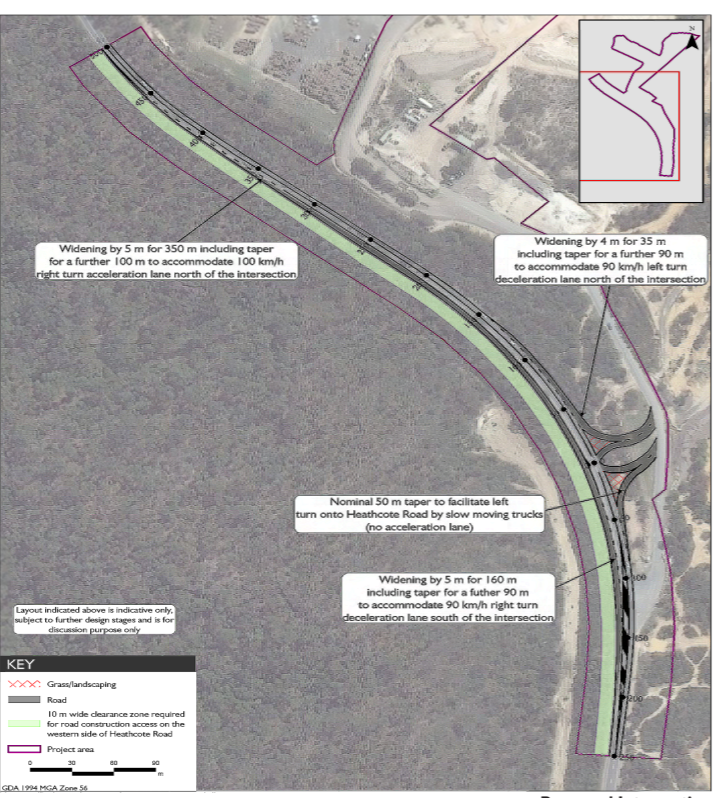
## What are the traffic impacts on Heathcote Road and how are they being addressed?

Everyone working and living in the area is aware of the shortcomings of Heathcote Road. A traffic assessment including extensive traffic modelling, was conducted by an external specialist experienced in modelling traffic from quarries and industrial facilities.

This showed that between October 2012 and October 2013, there were on average 49 trucks dispatched daily but on the busiest day of the year, 195 trucks were dispatched. Heathcote Road currently carries about 18,500 vehicles per day, so the quarry truck movements are currently less than one per cent of the traffic on Heathcote Road.

As a responsible neighbour, subject to approval of the importation/recycling application, Benedict Industries has undertaken to upgrade the current intersection by relocating it northward to the apex of the road bend and upgrading it to a seagull intersection designed to RMS standards, at a cost of more than \$4M.

The seagull intersection will include a channelised entrance on the apex of the curve in Heathcote Road; a deceleration/right turn lane on the northbound side of Heathcote Road; an acceleration lane on the northbound side of Heathcote Road; and a deceleration/left turn lane on the southbound side of Heathcote Road. Please see the proposed seagull intersection map.



Proposed Intersection  
 Proposed Inert Materials Recycling, Sandy Point Quarry, Menai

## How does Benedict manage water?

Since taking over management of the site, Benedict Industries has improved the on-site water management by installing a run-off management system to capture and treat stormwater.

Before the bund was erected, water ran across the site without settlement.

The quarry, quite properly, is subjected to strict regulatory guidelines which include sampling and testing of water before any controlled release into the National Park. This water has been found to be cleaner than the river water.

Furthermore, some of this water is used for processing and dust suppression.



Benedict Family



Erosion Control Sandringham



Proposed George's Cove Marina Moorebank



Rehabilitated Heron Park Chipping Norton

## We have listened

There has been concern expressed by certain residents about the future operation of the Sandy Point Quarry.

Benedict Industries thinks it is important to bring our neighbours up to speed and let them know we are listening to those concerns.

First, Benedict Industries has been granted owner's consent by the NSW Minister for Lands and Water to allow Benedict to lodge a Development Application with the NSW Department of Planning and Environment to recycle sand and sandstone (Inert Materials) at Sandy Point Quarry.

We know some of you are worried about the types of materials that may be recycled at the quarry. We have listened to those concerns and have therefore decided to limit the materials to be processed to what is called virgin excavated natural material (VENM): sands and sandstone, as well as excavation sands that contain minor amounts of inert contaminants such as concrete.

Glass, bricks, and concrete will NOT BE RECYCLED, other than to remove them from any excavated sands received that contain minor amounts of these materials. That is, these rejected materials will not be processed. They will be removed from the site.

The virgin excavated natural materials will come from excavations, such as tunnelling for the WestConnex project, as well as from other construction projects.

Second, Benedict is hopeful it will be able to recommence quarrying at the site in the next few months. It is intended that the recycled sand and sandstone will be blended with locally quarried materials for re-use on the many infrastructure projects currently underway.

Benedict is also currently seeking an amendment to its licence from the NSW Environment Protection Authority (EPA) to increase the volume of quarried material that can be crushed, ground and separated from 30,000 tonnes per year to 200,000 tonnes per year. The site was previously approved to quarry and operated at these volumes when leased by CSR/Readymix.

Ultimately the quarry will produce, between extraction and importation/recycling, some 720,000 tonnes. Our EPA licence (EPL) would need further amendment before these volumes can be produced.

All these approvals are subject to rigorous government processes.

## Open Day

Benedict Industries is holding an open day at the quarry on **Sunday 1 May 2016**. See the back-page for registration.

This will provide our neighbours and interested parties the opportunity to tour the site and ask our staff questions about its operation. Let us know your concerns and we will endeavour to put your mind at ease.

A Q&A on page 3 of this brochure addresses a number of concerns expressed by Sandy Point residents previously.

## Materials and quality controls

Any recycling and quarrying activities at Sandy Point will be subject to strict regulation by the EPA.

An air quality assessment carried out by an external specialist experienced in modelling air quality from quarries and industrial facilities has concluded airborne dust and deposited dust levels will continue to meet EPA criteria at all receptors and will not affect the amenity of local residents in Sandy Point or Picnic Point. Importantly, the EPA has found Benedict has made NO breaches in relation to dust.

All trucks entering the quarry will be inspected and any containing unacceptable materials will be immediately sent from the site.

## Sandy Point Quarry as a resource

The Sandy Point Quarry has been operating for over 50 years and is a valuable resource for the State.

The materials from the quarry have and will continue to supply major projects, including the WestConnex project.

The facility will continue to supply resources vital to the development of infrastructure in Sydney and will be fundamental to delivering on the NSW Premier's Building Infrastructure State priority. The site is also being currently used as a worksite for the upgrading of the Deadman's Creek Bridge and Sandy Point residential access upgrade.

## Can I find out more? or provide feedback?

Register for community open day at the Sandy Point Quarry:

[www.sandypointquarryinformationday.eventbrite.com.au](http://www.sandypointquarryinformationday.eventbrite.com.au)



## Addressing vandalism and environmental destruction

As Council and many locals know, when Benedict took over the management of Sandy Point Quarry the site was a neglected mess.

Police were concerned with ongoing vandalism, environmental destruction, illegal dumping, theft, damage and legal liability for the safety of trespassers.

To address these issues, Benedict constructed a bund wall on the north, east and south-east boundaries to secure the site and create a safe working environment - after fencing and security guards proved ineffective.

The bund wall has prevented trespassing in the quarry, particularly by noisy and destructive dirt-bikes, quads, 4WDs and stolen cars (four of which we have pulled out of the quarry's sedimentation control dams).

Importantly, the bund wall has stopped erosion and degradation of vegetation in the National Park caused by these illegal activities. The NSW National Parks & Wildlife Service Officers have praised Benedict for building the bund wall as they have seen a significant reduction in trespassing in the National Park, allowing regrowth to occur. They also said our quarry water is a substantial improvement on previous quarry operators' storm-water discharges.

Residents from around the quarry, particularly at Picnic Point, have also reported there has been

less noise from dirt-bikes since the bund wall was built.

The bund wall was constructed with recycled landscaping soil solely from Benedict's modern, licensed Chipping Norton Recycling Facility as well as with overburden material from within the quarry.

The recycled soil was continuously sampled and tested during bund wall construction and this material met all of the required EPA specifications. Benedict's recycled soil is used around Sydney on a daily basis on a range of high profile and sensitive projects by councils and contractors alike.

### The history of Sandy Point Quarry

- 1950s** Sutherland Shire Council began extracting material from the site with the approval of the land owner, Crown Lands.
- 1966** Consent issued for Quarry to AH Walker
- 1974** The boundaries of the site were increased with Council consent to include both Lots 1 and 2, covering 38 hectares.
- 1977** Walker Quarries took over operation.
- 1980** CSR Ready Mix took over operation.
- 1998** NSW Government entity CNLA took over operation. CNLA allowed a number of companies to operate on the site.
- 2010** Benedict Industries wins a competitive NSW Government tender to run the quarry.

### Our environmental improvements

Benedict Industries has undertaken a number of measures to protect the local environment, including:

- Installing a runoff management system to capture and treat all storm-water to EPA specifications - previously there was none;
- Removing historic illegally-dumped waste from the site;
- Sealing sections of internal roads to minimise dust emissions from truck movements;
- Installing extensive automatic irrigation to minimise dust generation on unsealed roads in the quarry;
- Applying an environmentally safe polymer sealant to previously cleared but inactive areas of the quarry and physically preventing access to these areas to minimise wind-generated dust;
- Improving the aesthetics of the site entrance which is the only part of the operation that can be seen by members of the public. NSW Police, NSW Parks and Wildlife and the NSW Rural Fire Services have each commended Benedict Industries' efforts in securing and cleaning up the site and reducing vandalism in the area.



### About Benedict

Established in 1966, this Australian family owned and operated company grew from being a haulage contractor to become the largest independent producer and reseller of quarried, recycled and landscape products in NSW.

Benedict's vision and track record is to restore and improve the land it occupies, leaving the land in better condition than we found it.

We commenced operations on our first site on Riverside Rd, Chipping Norton in 1977 and the site has been restored by us to create beautiful parklands at Heron Park, to be enjoyed by the local community.

On the Newbridge Rd, Moorebank site, which has been operating since 1996, Benedict is seeking, with very strong community and Council support, approval for a long-awaited marina, which has generated much excitement in the community.

### We're listening

As we are proud of the Sandy Point Quarry and the people we employ, we are always keen to show it to interested parties.

To organise a site visit please call our Operations Manager: Brett Jarvis on 0425 282 209 or register for our Open Day at: [www.sandypointquarryinformationday.eventbrite.com.au](http://www.sandypointquarryinformationday.eventbrite.com.au)



### Blasting - what are the impacts of noise levels and vibration?

There have been only 12 blasts in the three years Benedict has been operating the quarry. No extraction has occurred at the Quarry since January 2015.

All our blast results are well below the stringent limits set by the EPA and actually are at about 20 per cent or less of the EPA limits.

Some residents confuse the blasts from the military base with those at the quarry. The notable difference between the military blasts and a quarry blast, is that a military blast is high-frequency percussion and often accompanied by an audible explosion. Whereas a quarry blast is low frequency and contained underground, which may create more of a rumbling under foot (if you are close enough to the blast point).

Benedict and Orica have placed blast monitors at Sandy Point Community Centre to monitor each blast with a member from the community usually present. The monitored results of all quarry blasts has fallen well below the EPA recommended guidelines and will continue to do so because of the careful way in which we design each blast. We understand that the community has a right to expect this from us.

Local residents, the Local Member and the EPA, have taken up our standing invitation to inspect the

blasts and the monitoring being undertaken at the Community Hall. Offers have been made to install equipment to monitor the blasts at specific residences where certain owners have expressed a high degree of concern. While this offer is yet to be taken up, we think it would help alleviate these concerns. Please contact us any time to express your interest for this option - we are confident that we can demonstrate that our blasting does not impact on your property.

Benedict advises the EPA, the Local Member, concerned residents and the local community group of its intention to blast approximately three working days before it is scheduled. If you would also like to receive notifications please contact us.

In addition, a red flag is placed outside the community centre seven days prior to a scheduled blast.

Videos of the blasts can be made available to you if you are interested.

We always plan to blast in the middle of the day and week to minimise the chance of disruption.

### What are the impacts of dust and air quality?

Sydney can experience severe winds, however we are confident the quarry does not create dust that will affect residents. We coat and wet areas of concern in medium and high winds and negligible dust will be created by our quarry operations.

Any residents experiencing dust should be aware that this overwhelmingly comes from surrounding areas, mainly to the south of us, which is beyond our control. When even a moderate southerly wind occurs, this wind picks up dust from as far away as the huge open areas of the Menai tip where there also is a very high mountain of raw sandstone, hundreds of thousands of cubic metres in size. It also picks up bull dust from kilometres of dirt bike and 4WD trails in use in neighbouring lands that are south of our quarry. On any given day, there are numerous dirt bikes racing around it causing a great deal of dust and erosion. When the wind picks up, it blows right over the Quarry northward to Sandy